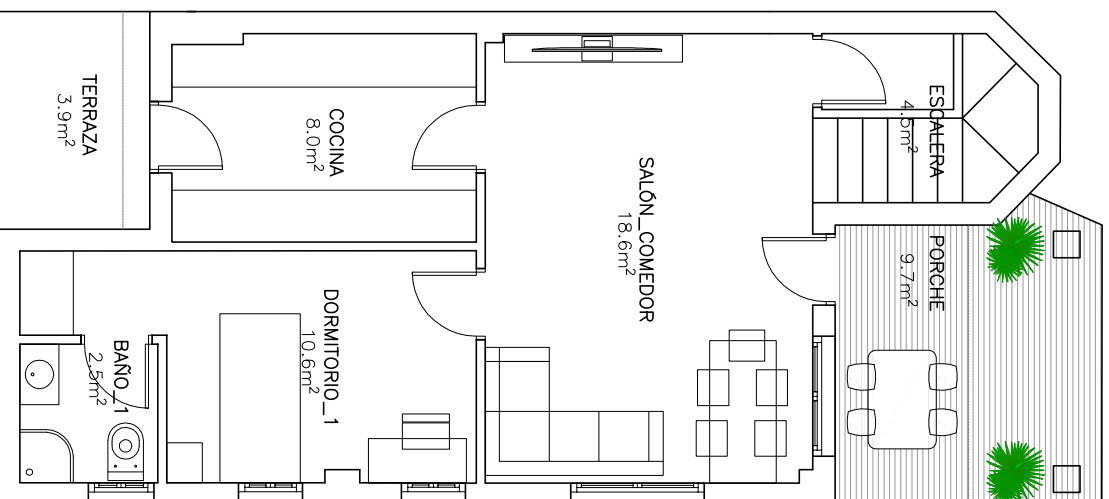


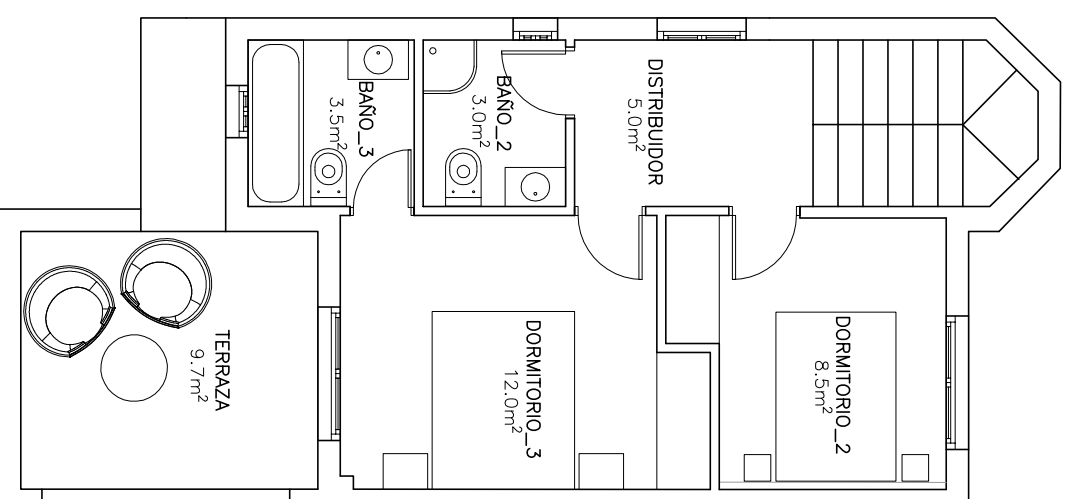
RESIDENCIAL BUNGAVILLAS SOL URBANIZACIÓN LA MARINA

VIVIENDA TIPO_B

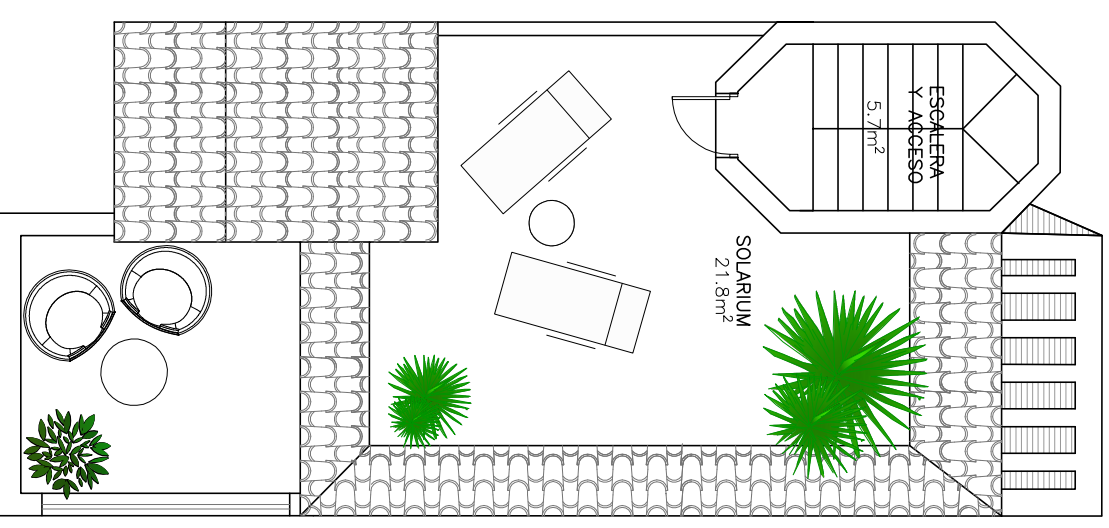
SUP. APROX. PARCELA	170.5m ²
SUP. CONSTR. P.B	56.2m ²
SUP. CONSTR. P.1	45.0m ²
SUP. CONSTR. P.SOL.	8.2m ²
SUP. CONSTR.	109.4m ²
SUP. ÚTIL EXTERIOR P.B	13.6m ²
SUP. ÚTIL EXTERIOR P.1	9.7m ²
SUP. ÚTIL EXTERIOR SOL.	21.8m ²
SUP. ÚTIL EXTERIOR	45.1m ²



PLANTA BAJA



PLANTA PRIMERA



PLANTA SOLARIUM